

# STEP BY STEP INSTRUCTIONS



## STEICOsill timber

Sealing system for window sills

The sealing system STEICOsill timber is a simple and safe solution for the execution of window connections in timber construction.

The wood fibre insulating wedge STEICOfix acts as a second water removal layer and prevents unforeseen ingress of moisture in the area of the window sill from damaging the ETICS and the layers behind it. The solution works because common and easy to process materials are used.



STEICOfix: Wood-fibre insulation wedge with laminated, diffusion-open underlay as second water removal layer.



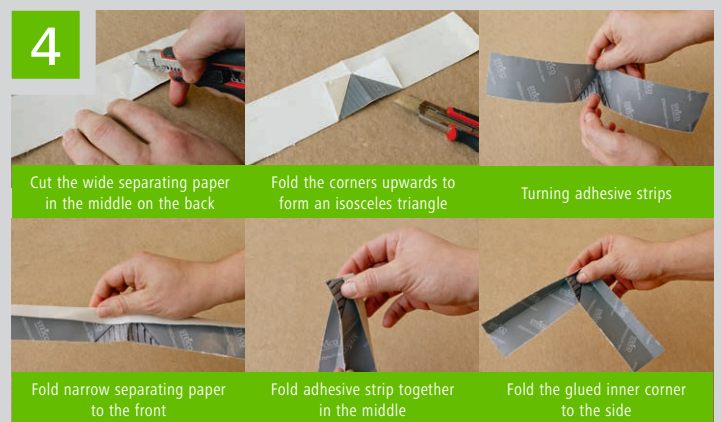
Applying the diffusion-open STEICO underlay STEICOmulti UDB as temporary weather protection until window installation



The windows are installed on the underlay. Before installing insert space between STEICOfix and cut the underlay back trapezoidally (see picture 5)



Then apply the STEICOmulti tape F 20/40 mm adhesive strips to the insulating wedge in such a way that a three-sided "trough" is formed



To form the corners, the adhesive strips are cut to length twice the width of the insulation wedge. Then follow the steps described above



# STEP BY STEP INSTRUCTIONS



5

As a bedding material for the insulating wedge apply STEICO *multi fill* adhesive beads,  $e \leq 300$  mm



6

Installation of the STEICO *fix* insulating wedge: **TIP:** Fold back the separating paper, for easy removal later



7

Insert the STEICO *fix* insulating wedge into the recess, remove the remaining separating paper and press the STEICO *multi tape F 20/40 mm* into place



8

For secure render connection underneath the STEICO *fix* insulating wedge, install a parapet profile (stainless steel screws or staples)



9

The protruding flap of the laminated underlay is bonded to the drip edge of the parapet profile using STEICO *multi fill*



10

**TIP:** Combribands glued on at an angle guide any moisture safely to the drip edge

Application of STEICO *multi fill* adhesive beads  $e \leq 30$  cm for elastic fixing of the window sill

# STEP BY STEP INSTRUCTIONS



11

**TIP:** Store compribands in the cooler box to prevent them from expanding too quickly.



Window sill installation. **TIP:** The rear bead is located in the matching window groove, the front one has a distance of  $\geq 30$  mm to the render facade

12



Construction and assembly of the reveal board. Driving rain protection is achieved by attaching joint sealing tapes along the back edge and short edges

13



Application of STEICO multi fill adhesive beads into the timber frame construction to ensure a secure connection for the reveal board

14



Inserting the reveal board flush with the outer edge of the ETICS facade  
**TIP:** Allow for possible window frame extension

15



Fixing of the reveal board with pressure for undisturbed curing of STEICO multi fill by means of wide back staples or stainless steel screws

16



Installation of a suitable rendering strip for safe rendering and continuation of the ETICS work